

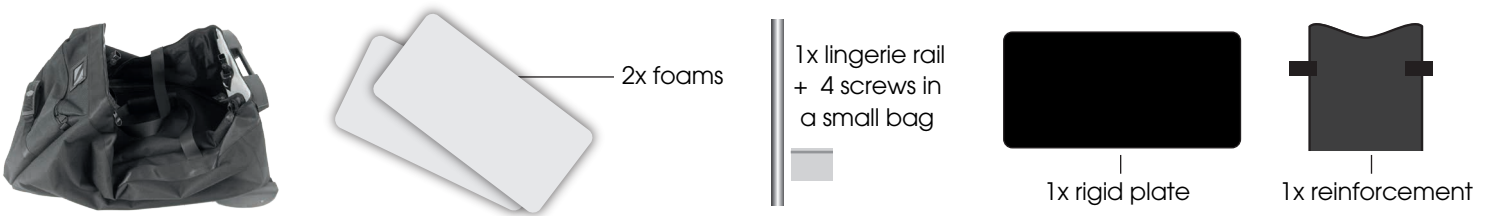


# Lingerie bag

## How to assemble your bag in few steps

Your lingerie bag will follow you a very long time in your professional life. Please utilize instructions below to assemble your shoe bag in few steps.

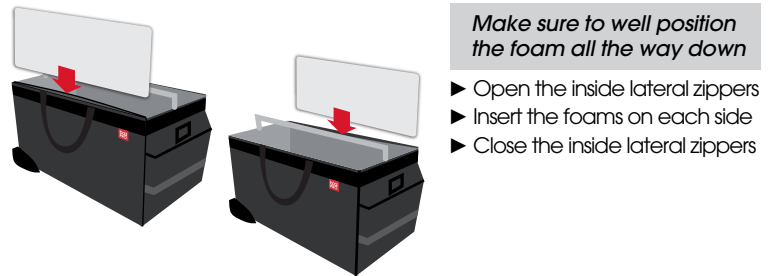
### 1 REMOVE THE INSIDE ELEMENTS FROM THE BAG



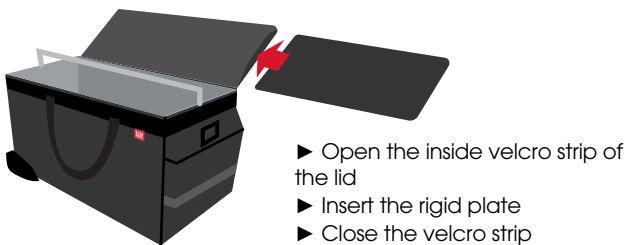
### 2 SCREW THE LINGERIE RAIL



### 3 INSERT BOTH FOAMS IN BOTH SIDES



### 4 INSERT RIGID PLATE IN THE LID



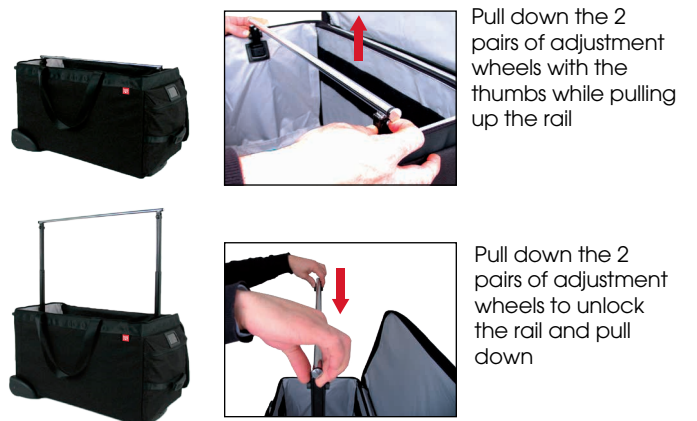
### 5 INSERT THE REINFORCEMENT FOR THE RAIL



### 6 INSERT THE LID COVER



### INSTRUCTIONS FOR USE: THE LINGERIE RAIL



Business In Motion Inc.

12081 Katy Rd. Suite 809  
FORT WORTH, TX 76244  
Office: 888-761-7280

[www.bagpro.us](http://www.bagpro.us)