

TOOL(S)

Screwdriver with square bit



1
Locate the position of the telescopic handle on the outside.



2
Open the bag to access the bottom lining of the bag.



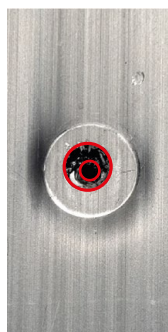
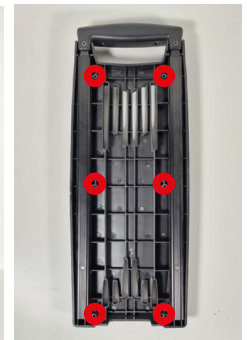
3
Unhook the lining at the bottom of the bag to access the screws.



4
Using a screwdriver, unscrew the screws from inside the bag.



5
Repeat the operation on all 6 screws.
Remove the telescopic handle.



6
Install the new telescopic handle by starting with screwing in two screws with washers.
Ensure proper alignment of the bag's holes with those of the telescopic handle casing before screwing.



7
Repeat the operation on all 6 screws.
The screwing should be done until a slight compression of the material becomes visible.



8
Reattach the linings to their Velcro fasteners.
Check for proper functioning.